



Disaster Recovery with EMC CLARiiON and VMware SRM

Advanced Disaster Recovery with EMC CLARiiON, EMC MirrorView and VMware Site Recovery Manager: integrated DR of virtual server and storage environments

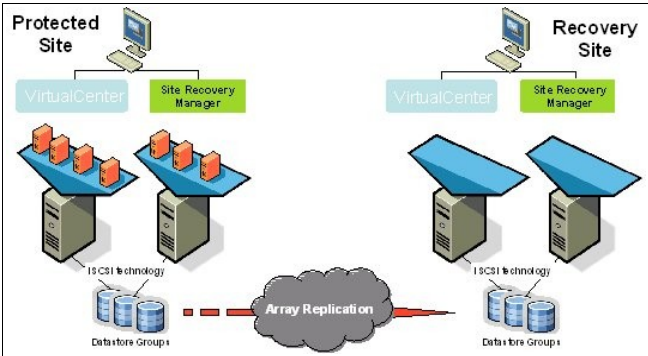
A Disaster Recovery solution that is fast, reliable, easy to manage and automated within virtual environments based on EMC MirrorView and VMware Site Recovery Manager.

Content and objectives

- Presentation of user challenges and requirements,
- Presentation the reference DR architecture
- Presentation of the VMware Site Recovery Manager (SRM),
- Live demonstration of VMware Site Recovery Manager configuration,
- Live demonstration of Disaster Recovery test,
- Live demonstration of Disaster Recovery.

Value for your IT infrastructure

- Fast, reliable and easy-to-administer Disaster Recovery,
- Full integration of VMware Site Recovery Manager with EMC replication solutions and procedures,
- Integrated Disaster Recovery test features,
- Reliable and easy to deploy, integrating and adding value to the advanced functionality of the virtual VMware infrastructure (VM motion, VM HA, DRS, Storage Vmotion, SRM),
- Suitable for all VMware iSCSI, FC and NFS storage environments,
- A storage solution which is simple, scalable and optimised for virtual server environments.



Duration : 3h00	Location :
Demo : 1h30	Bull Grenoble or remote
Audience : IT managers, architects, storage / applications / telecommunications & networks managers, storage administrators, project managers, consultants, ...	
Keywords: : CLARiiON, Site Recovery Manager, MirrorView, VMware, ESX, VC, iSCSI	

Demonstration Brief



Bull StoreWay EMC Solution Center

Bull StoreWay EMC Solution Center addresses major today's storage challenges of IT managers. It proposes live demonstrations in real environments, using the latest market technologies.

Technical infrastructure

Primary Site – 143 TB :

- 3 Bull NovaScale R460 servers running VMware ESX, VMs Windows 2003 32 & 64 bits
- 1 Virtual Center, NovaScale server
- 1 Bull Escala PL260 server, AIX 6.1 and PowerVM, 1 HMC station
- 1 Express 5800 server 120Rh (VCB proxy)
- 1 Symmetrix V-Max, 37 TB, FC/SATA
- 1 CLARiiON CX4-240, with iSCSI and FC connectivity, 28 TB FC / SATA, 5 EFD
- 1 Celerra NS-20F, with iSCSI /CIFS / NFS connectivity, FC disks (24 TB)
- 1 Centera / 4 nodes, SATA disks (12 TB), with Ethernet connectivity, 1 CUA
- 4 Cisco 24 ports Ethernet switches, 1 Brocade 24 ports FC switch
- 1 VTL DL3D 3000, 42 TB
- 2 RecoverPoint appliances

Backup site – 42 TB :

- 1 Bull NovaScale R460 server running VMware ESX and VMs Windows 2003 32 & 64 bits
- 1 Virtual Center, NovaScale server
- 1 Bull Escala PL260 server, AIX 6.1 and PowerVM
- 1 CLARiiON CX4-120, with iSCSI and FC connectivity, with 26 TB FC/SATA disks
- 1 Celerra NS-20F, with iSCSI/CIFS/NFS connectivity with 21 TB both FC and SATA disks
- 2 Ethernet Cisco 24 ports switches, 1 Brocade FC 24 ports switch
- 2 RecoverPoint appliances

The missions of the StoreWay Solution Center

The expert team of the Solution Center is at your disposal to help you to:

- Understand the latest trends and anticipate the evolution of new storage technologies,
- Reduce implementation risks and increase productivity,
- Evaluate potential acquisition and operational cost savings,
- Find solutions to your business challenges and compliance with legal constraints,
- Analyse the best practices to configure and manage your storage environments.

A complete range of services

The StoreWay Solution Center enables you to benefit from its expert teams and proposes:

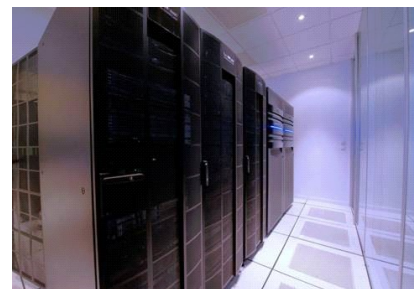
- **A program of seminars**, addressing major issues like storage, virtualization, backup/archiving and Disaster Recovery, ... through remote webcasts or seminars in Grenoble,
- **Personalized seminars**, organized upon request through your local sales representative,
- **Architecture workshops**, on the latest technologies and innovations.

Bull StoreWay – Integrator of storage solutions.

As a storage integrator, Bull offers a complete range of consulting, implementation and support services covering all the aspects of data management. Through its StoreWay division, Bull partners with leaders within the storage industry.

As an ASN partner of EMC (Authorized Services Network), Bull StoreWay has a network of more than 400 certified support technicians and implementation engineers.

Bull StoreWay ensures the design, the deployment and the support of storage solutions adapted to your needs.



For more information and reservations, contact your sales representative or: storeway_contact@marketing.bull.net

For more information and news concerning the Solution Center, connect to: www.storewaysolutioncenter.com