



Continuous data protection and DR with EMC RecoverPoint

Demonstration of data replication to a local or backup site, between heterogeneous storage systems and virtualised storage servers.

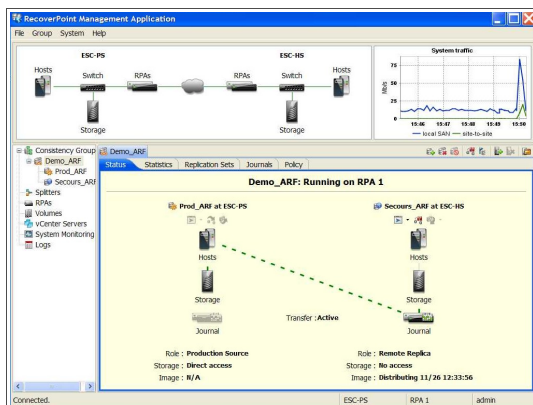
EMC RecoverPoint is a unified Continuous Remote (CRR) and Continuous Data Protection (CDP) solution ensuring data recovery from any point in time. RecoverPoint supports both IP networks and SAN fabrics, heterogeneous storage systems and either physical or virtualised servers. The optimised network management, synchronous and asynchronous modes and data compression enable minimised RPOs, whatever the throughput, latency or quality of the network used. EMC RecoverPoint improves service levels and reduces replication costs to the backup site.

Content and objectives

- A review of Disaster Recovery challenges
- The definition of the Disaster Recovery and Continuous Data Protection architecture,
- The integration of EMC RecoverPoint,
- The configuration of replication between EMC Symmetrix and CLARiiON arrays,
- Network management between local and backup sites: compression, latency, allocated bandwidth,
- The recovery of data from any point in time,
- Disaster Recovery (failover) and return to initial state (failback) following the incident.

Value for your IT infrastructure

- Unified solution for data protection and/or replication, independent from your existing storage infrastructure,
- Minimal investment by enabling the re-use of available SAN and WAN infrastructures, and existing storage systems,
- Reduction of data volumes by a factor of 10 to 1, allowing the use of low bandwidth connections and reducing telecommunication costs,
- Dynamic and automated management of QoS (Quality of Service),
- Compatibility with virtual servers, including VMware, and physical servers such as Windows, Linux, and UNIX,
- Capability to cascade to several sites, as well combining both synchronous and asynchronous replication,
- Integration with existing databases, ERP, Exchange messaging and Windows VSS.



Duration : 2h30	Location : Bull Grenoble or remote
Demo : 1h30	
Audience : IT managers, architects, storage / applications / telecommunications & networks managers, storage administrators, project managers, consultants, ...	
Keywords: EMC RecoverPoint, replication, Disaster Recovery, CDP, SAN, IP, WAN, AIX, VMware, heterogeneous	

Demonstration Brief

Bull StoreWay EMC Solution Center

Bull StoreWay EMC Solution Center addresses major today's storage challenges of IT managers. It proposes live demonstrations in real environments, using the latest market technologies.

Technical infrastructure

Primary Site – 143 TB :

- 3 Bull NovaScale R460 servers running VMware ESX, VMs Windows 2003 32 & 64 bits
- 1 Virtual Center, NovaScale server
- 1 Bull Escala PL260 server, AIX 6.1 and PowerVM, 1 HMC station
- 1 Express 5800 server 120Rh (VCB proxy)
- 1 Symmetrix V-Max, 37 TB, FC/SATA
- 1 CLARiiON CX4-240, with iSCSI and FC connectivity, 28 TB FC / SATA, 5 EFD
- 1 Celerra NS-20F, with iSCSI /CIFS / NFS connectivity, FC disks (24 TB)
- 1 Centera / 4 nodes, SATA disks (12 TB), with Ethernet connectivity, 1 CUA
- 4 Cisco 24 ports Ethernet switches, 1 Brocade 24 ports FC switch
- 1 VTL DL3D 3000, 42 TB
- 2 RecoverPoint appliances

Backup site – 42 TB :

- 1 Bull NovaScale R460 server running VMware ESX and VMs Windows 2003 32 & 64 bits
- 1 Virtual Center, NovaScale server
- 1 Bull Escala PL260 server, AIX 6.1 and PowerVM
- 1 CLARiiON CX4-120, with iSCSI and FC connectivity, with 26 TB FC/SATA disks
- 1 Celerra NS-20F, with iSCSI/CIFS/NFS connectivity with 21 TB both FC and SATA disks
- 2 Ethernet Cisco 24 ports switches, 1 Brocade FC 24 ports switch
- 2 RecoverPoint appliances

The missions of the StoreWay Solution Center

The expert team of the Solution Center is at your disposal to help you to:

- Understand the latest trends and anticipate the evolution of new storage technologies,
- Reduce implementation risks and increase productivity,
- Evaluate potential acquisition and operational cost savings,
- Find solutions to your business challenges and compliance with legal constraints,
- Analyse the best practices to configure and manage your storage environments.

A complete range of services

The StoreWay Solution Center enables you to benefit from its expert teams and proposes:

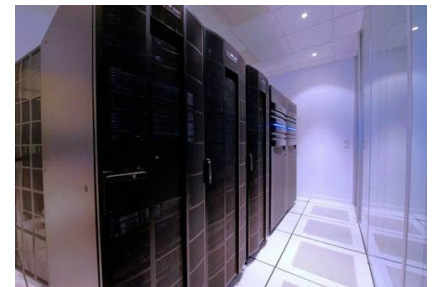
- **A program of seminars**, addressing major issues like storage, virtualization, backup/archiving and Disaster Recovery, ... through remote webcasts or seminars in Grenoble,
- **Personalized seminars**, organized upon request through your local sales representative,
- **Architecture workshops**, on the latest technologies and innovations.

Bull StoreWay – Integrator of storage solutions.

As a storage integrator, Bull offers a complete range of consulting, implementation and support services covering all the aspects of data management. Through its StoreWay division, Bull partners with leaders within the storage industry.

As an ASN partner of EMC (Authorized Services Network), Bull StoreWay has a network of more than 400 certified support technicians and implementation engineers.

Bull StoreWay ensures the design, the deployment and the support of storage solutions adapted to your needs.



For more information and reservations, contact your sales representative or: storeway_contact@marketing.bull.net

For more information and news concerning the Solution Center, connect to: www.storewaysolutioncenter.com