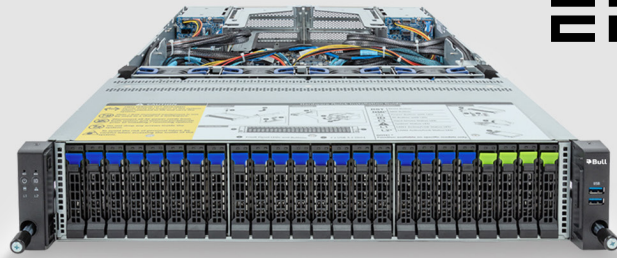


BullSequana SA21Sa

BullSequana Agility



The BullSequana Agility family features a versatile range of 1- and 2-socket BullSequana SA servers, manufactured in France and powered by the latest generations of AMD EPYC™ and Intel® Xeon® Scalable processors. The servers are ideally suited for virtualised workloads and all modern architecture patterns, such as private and hybrid clouds, containerised infrastructures, hyperconverged and scale-out solutions. Various GPU options enable acceleration of AI/ML, video processing and image rendering workloads. BullSequana SA servers are delivered as standalone units or fully integrated in racks, along with networking and storage components to drastically reduce time to value.

With 8 PCIe/OCF expansion slots, the BullSequana SA21Sa offers an incredible external connectivity capability, combined with dual 4th or 5th Gen AMD EPYC™ Series processors for extreme performance, and up to 28 drives, RAID protected, preferably full flash for IO intensive data processing. The BullSequana SA21Sa is recommended for large hyperconverged infrastructures and storage scale-out platforms, and workloads requiring extreme network bandwidth or extreme external storage IOs.

Features

- Dual AMD EPYC™ 9004 / 9005 Series processor
- 12-channel RDIMM DDR5, 24 x DIMMs
- Dual ROM technology supported
- 2 x 1Gb/s LAN ports (Intel® I350-AM2)
- 1 x Dedicated management port
- 4 x 2.5" SATA/SAS hot-swappable bays on rear side
- 24x2.5" NVMe SAS/SATA hot-swappable bays
- Onboard 12Gb/s SAS expander
- 3 x Ultra-fast M.2 with PCIe Gen3 interface
- 6 x FHHL PCIe Gen5 expansion slots and 2 x OCP 3.0 Gen5 mezzanine slots
- Dual 2000W (240V) 80 PLUS Titanium redundant power supply

Technical specifications

Dimensions and Weight	<ul style="list-style-type: none"> • 2U (W438 x H87 x D815 mm) & 35 kg
CPU	<ul style="list-style-type: none"> • AMD EPYC™ 9004 & 9005 Series processors • Dual processors, cTDP up to 400W
Memory	<ul style="list-style-type: none"> • 24 x DIMM slots • 12-Channel DDR5: memory per processor • Memory speed: Up to 4800 MT/s (EPYC 9004) / up to 6400 MT/s (EPYC 9005)
LAN	<ul style="list-style-type: none"> • 2 x 1Gb/s LAN ports (1 x Intel® I350-AM2) • Supported NCSI function 1 x 10/100/1000 management LAN
Video	<ul style="list-style-type: none"> • Integrated in Aspeed AST2600 • 2D Video Graphic Adapter with PCIe bus interface 1920x1200@60Hz 32bpp
Storage	<ul style="list-style-type: none"> • 4 x 2.5 NVMe/SATA/SAS hot-swappable bays • 24 x 2.5" SATA/SAS hot-swappable bays • SAS card is required for SAS devices support

Expansion slots	<ul style="list-style-type: none"> • 4 x PCIe Gen5 x16 FHHL slots • 2 x PCIe Gen5 x8 FHHL slot • 2 x PCIe Gen5 x16 OCP 3.0 slots-supported NCSI function • 3 x M.2 slots (M-key, PCIe Gen3 x4, NGFF-2280/22110)
Front I/O	<ul style="list-style-type: none"> • 2 x USB 3.2 Gen1
Rear I/O	<ul style="list-style-type: none"> • 2 x USB 3.2 Gen1, 1 x Mini-DP, 2 x RJ45, 1 x MLAN
Backplane I/O bandwidth	<ul style="list-style-type: none"> • PCIe Gen4 x4 or SATA 6Gb/s or SAS 12Gb/s
TPM	<ul style="list-style-type: none"> • 1 x TPM header with SPI interface • Optional TPM2.0 kit
Power supply	<ul style="list-style-type: none"> • Dual 2000W (240V) 80 PLUS Titanium redundant power supply • AC input: 100-240V
System fans	<ul style="list-style-type: none"> • 4 x 80x80x38 mm (18,300 rpm)
System management	<ul style="list-style-type: none"> • Aspeed® AST2500 management controller • Built-in html5 GUI • iKVM • RBAC, LDAP integration, RADIUS support • SNMP, IPMI and Redfish management protocols • SNMP trap, email and Redfish event notifications • OneBSM for centralise monitoring of multiple BullSequana SA servers
Operating conditions	<ul style="list-style-type: none"> • Operating temperature: 10°C to 35°C • Operating humidity: 8-80% (non-condensing) • Non-operating temperature: -40°C to 60°C • Non-operating humidity: 20%-95% (non-condensing)
OS certified	<ul style="list-style-type: none"> • Windows Server 2022 / 2025 VMware vSphere 8 / 9
Other OS Compatibility	<ul style="list-style-type: none"> • Windows Server 2019 • RHEL 8 / 9 • SLES 15 • Ubuntu 20 / 22 / 24 • VMware ESXi 7 • Citrix Hypervisor r 8.2 LTSR CU <p>Please refer to your sales contact for OS compatibility detailed list</p>

*256GB: check for availability with your sales representative

Connect with us

bull.com



Bull is a registered trademark © Copyright 2026, Bull SAS – All rights reserved.

